

JUTE THEATRE COMPANY

ANNUAL REPORT
2020





CONTENTS

- 04** About JUTE
- 06** Vision, Purpose, Mission, Values
- 08** Core Programs of JUTE
- 09** 2020 Revenue Sources
- 10** Goals
- 11** 2020 Statistics
- 12** Chair's Report
- 13** Artistic Director/ CEO Report
- 14** Productions & Tours
- 18** New Work Development Programs
- 25** Skills Development & Participant Programs
- 28** Outreach Programs
- 30** Reviews
- 32** Sponsors & Partnerships
- 34** Appendix - 2019 Audited Statements



ABOUT JUTE

JUTE Theatre Company's story is a simple one; the best stories are. Like all the best stories, ours is rich with courage, resilience, hope and joy. It began with a simple passionate idea, yet one that has endured for almost 30 years, engaging the talents and the hearts of artists and audiences alike. Over time, our story has developed a compelling plot; one that twists and turns, adapts and refines, delivering satisfying experiences time after time. But our story is also grounded in reality; with a clear eye on the practical challenges of the current world and foreseeable landscape.

JUTE is uniquely placed to promote diversity through the performing arts from its base in northern Queensland; a region teeming with cultural influences from Asia, the Pacific, Italy, Greece, Eastern Europe, Middle East and Africa, and with a significant Indigenous Australian population. With a keen sensibility to best practice in intercultural engagement and a strong cultural protocols policy, JUTE has an ongoing commitment to developing diverse voices within all its programs and attracting a diverse audience base.

It is a story with no denouement in sight – for it has a vision, a mission and a strategy to build upon its past successes and to forge ahead into a bright and ambitious future.

From humble beginnings in regional obscurity, stretched and moulded through years of hard work, vision and persistence, **JUTE Theatre Company** has become a dynamic, award-winning, nationally-regarded theatre company, sitting at the forefront of industry practice and consistently seeking new boundaries to explore in theatre practice.









VISION

To change the world through theatre.

PURPOSE

Daring to develop and tell diverse stories that challenge, inspire and bring us together ... through the power and magic of theatre.

MISSION

JUTE will not rest until all the untold stories have been told, until there is no regional artist needing support and our audience and community's need for diverse stories is fully sated.

VALUES

- Diverse
- Inclusive
- Respectful
- Transparent
- Can do attitude
- Strategic focused
- Daring
- Challenging the status quo
- Unique
- Integrity
- Partnership focused
- Regional champions

CORE PROGRAMS OF JUTE

Each element of the company programs is infused with the company's strategic thinking to build capacity. All our rigorous writing programs, long-term investment in creative script development, training and community outreach programs, creative and strategic partnerships, and our ambitious productions and tours are informed by candid critical review and forward-facing vision to ensure we build a stronger, more viable, more creatively relevant company.

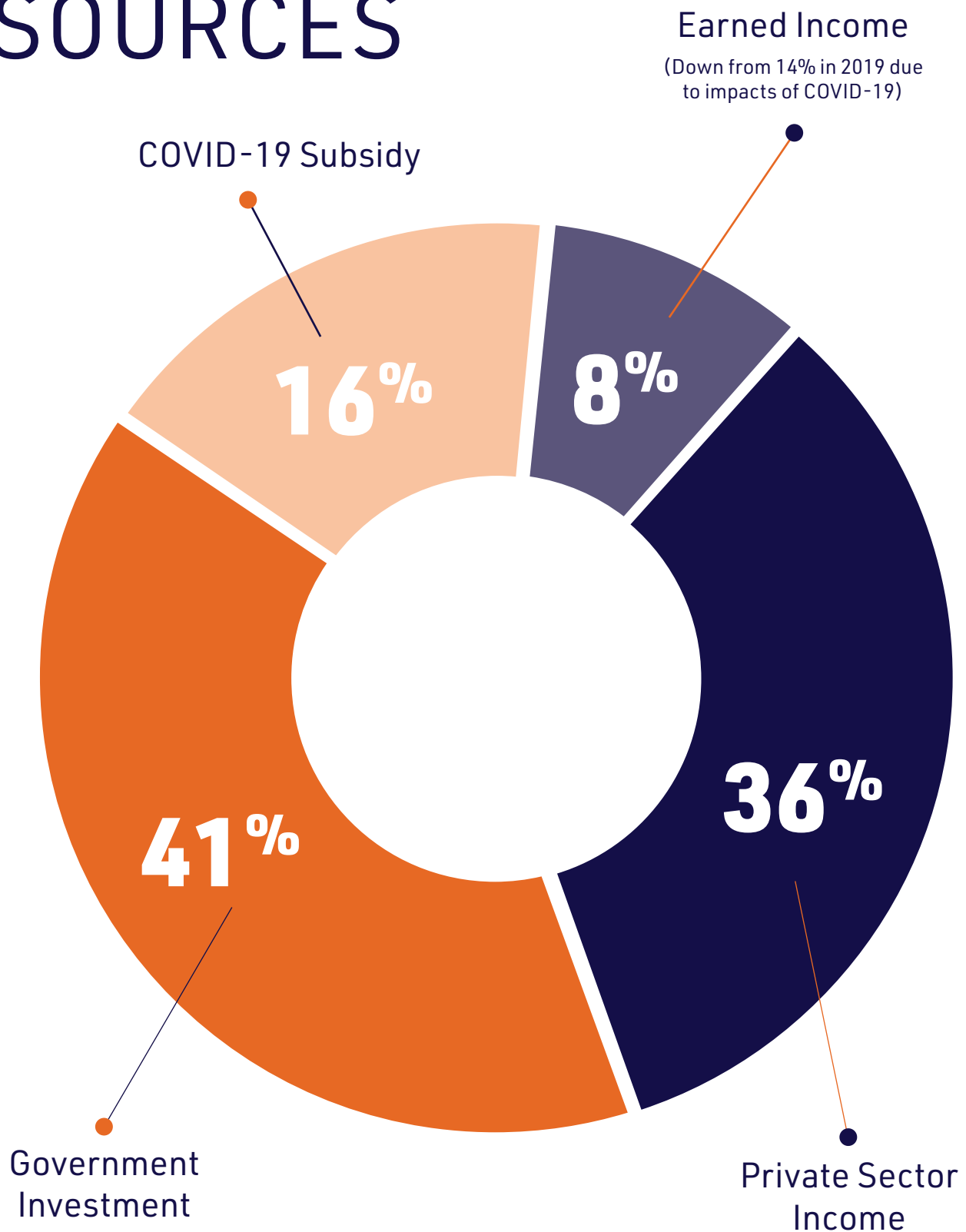
JUTE has the proven capability, through a series of successful collaborations, to witness its creative impact being realised deep into the regions and beyond. And JUTE has a long history of developing artists – writers, creatives and production teams – and daring to tell stories that challenge, inspire and bring us together ... through the power and magic of theatre.

JUTE DOES THIS THROUGH OUR ANNUAL PROGRAMS WHICH INCLUDE:

- **Productions**
- **Touring**
- **Dare to Dream Tour & Residency Program**
- **New Work Development Programs**
- **Youth and Outreach Programs**
- **Training and Mentorship Programs**

JUTE's program was impacted by COVID-19 throughout 2020.

2020 REVENUE SOURCES



GOALS

- **CREATE** distinctive, resonant theatre experiences.
- **ENGAGE** with arts sector & **community**.
- **EMBED** organisational resilience through **sustainable development** of people & processes.
- **FOCUS** on economic growth & sustainability to **enable our vision**.

JUPE

2020 STATISTICS

HING
ing - so
st to factory. be
n - not 100%
honour Gah - cultural meditation
healing
HOLDER for anything
in say anything
Union?



COVID-19 NOTE:

JUTE programs were impacted by COVID-19 with reduced audience, artist and participant numbers due to cancelled programs.

Number of Attendees & Participants:

TARGET **6,900**

ACTUAL **778**

% of Artists & Artworkers who are First Nations/CALD:

59%

Number of paid artists and or Artworkers:

TARGET **72**

ACTUAL **71**

Number of Activities delivered outside your local authority area:

TARGET **97**

ACTUAL **8 (Digital delivery)**

% of total income that is private sector sponsorship and/or Fundraising and earned income:

TARGET **43%**

ACTUAL **44%**

CHAIR'S REPORT

As I write this report, we have just dodged a cyclone as we are preparing to reproduce one on stage! The same show that this time last year we had to cancel due to COVID-19 after two nights – of course I am referring to our production of “To Kill a Cassowary” the work we have nurtured and grown with writer Laurie Trott and Director Bridget Boyle for the past few years from idea to full blown play. Pun intended!

2020 that most perverse of years provided us with tears and drama as well as a wonderful opportunity to plan, reflect and reshape. Undoubtedly the JUTE team of staff, creatives and Board got to demonstrate just how agile and resourceful we can be!

As with everyone across the world we changed our plans and discovered we could do many things online and from home. Of course, we totally missed our live theatre and face to face meetings – but as I have learnt from my years as Chair of this wonderful company the show must go on! And it does!

I am delighted that this year with the many new relationships we have made despite the impacts of the global pandemic and of the delightful partnerships and discovery of artists within diverse communities across Cairns in particular the African communities in West Cairns. I can't wait to see how these artists and stories evolve.

I am also thankful to the many sponsors and funders who continue to invest in our vision thank you Tim Fairfax Family Foundation, Ergon Energy, Hansen Yuncken, O'Connor Law, Just The Man, Arts Queensland, Social Impact Hub, Westpac to name a few.

I offer my absolute appreciation to my fellow JUTE Board members, we stayed strong this year – a solid creative force and brains trust. Thank you Saurav, John-Paul, Karyn, Patricia.

To add to our commitment to growth and learning we offered two Board Observer places this year and I was delighted to welcome Sangeetha Bayda and Felix Munyeimana.

We also welcomed David Layt to the Board. David brings a great financial and legal mind as well as a love of theatre.

JUTE is made up of many creative and passionate hearts none the least that rest in our staff team Narelle, Kathryn, Gaby, Tanyha as well as the many actors, designers, theatre makers and volunteers who make the magic happen. Each one of you make our world sparkle just a little brighter as you provide the foundation for us to come together to tell the stories that matter.

JUTE is led by our CEO and Artistic Director Suellen Maunder whose ability to face a challenge front on with compassion, determination and flair knows no bounds. Thank you Suellen for helping us create the worlds we need to see and developing the artists we need to show us.

Gill Townsend

Chair



ARTISTIC DIRECTOR/ CEO REPORT

I imagine that every annual report for 2020 will in some way be defined by the COVID-19 Pandemic. For the arts industry world-wide the impact has been brutal, particularly for independent artists who work gig by gig. It also highlighted the knife edge of financial stability that the sector glides along from year to year.

The shock of having to shut down the season of our first work in the refurbished Bulmba-ja Arts Centre, after being in temporary accommodation for 18 months, was disheartening to say the least (there were tears!). But in true JUTE form, the company rallied and once we reckoned with the longevity of the impact of COVID-19, we began to strategize how to keep artists engaged, how to support them and how to keep JUTE responding to the needs of the community.

JUTE was used to team members working from their home office at various times so the shutdown was relatively painless. What was key during this time was to stay in video contact with daily morning catchups with the team, a routine that continued to great effect face to face once we returned to the office. Cancelling, moving and reshaping the year took time and there does not seem to have been a slow time for the JUTE team throughout 2020. We took advantage of the lack of the pressure of production and touring to take the time to successfully implement our new Customer Relationship Management program.

We also made a commitment to supporting the development of two young Indigenous artsworkers, one in Business Administration and the other in Technical Production.

At the beginning of 2020 before COVID-19 hit, we undertook a creative development and rehearsed and produced a show before being shut down just 2 performances into the season. Through COVID-19, with strict and ever changing COVID-19 Plans we managed to produce 2 creative developments and an artist-in-residence program for migrant and refugee youth, all three having a public showcase at the end of the week of development. Our audiences for creative developments have grown over the years and the COVID-19 year was no exception with record audience numbers keen to get

back to the theatre.

We also undertook and digitally delivered a youth writing program across North Queensland, supported an emerging producer to develop and produce their work, delivered 3 residencies of our face-to-face writing program "Write Sparks" and managed 3 and a half terms of our JUTE Actors Studio. We began production for a unique online Technical Production Course which will be completed in 2021.

JUTE also took advantage of the range of grants being offered by State and Federal government responding to the needs of the arts sector through and beyond COVID-19 and supported independent artists new to applying for grants to successfully fund their own projects.

Regardless of COVID-19, we made some extraordinary work, engaged deeply with our community and our community of artists and turned the strengths of the business towards shoring up the future. We acknowledge that our geographic isolation worked in JUTE's favour and that we were much more fortunate than other companies in metropolitan centres.

On reflection, 2020 offered the company the opportunity to think about how it engaged with our community, how we might work through a pandemic in the future and the importance of a solid regional arts infrastructure when the industry is destabilised. I am happy to say that as I write this I can hear rehearsals taking place for the remount of the show that was cancelled, putting JUTE back on track to bring new audiences to theatre.

We are truly grateful for the support and understanding of our funding bodies, particularly Arts Queensland and Tim Fairfax Family Foundation for supporting us through a very strange year. We applaud all the artists who found new ways of generating income and who came to terms with the fragility of a freelance practice. I would like to thank the JUTE Team for their resilience and ingenuity and passion for JUTE in the face of a changing world and I thank the JUTE board for their constant support and commitment and for holding the dream of JUTE close to their hearts.

PRODUCTIONS & TOURS

TO KILL A CASSOWARY

BY LAURIE TROTT

**ONE HARD-HEADED BLOKE,
ONE HARD-HEARTED DAUGHTER IN A BATTLE FOR THE FUTURE.**

Old Amos leads an eccentric life hidden deep in the tropical rain forest of Far North Queensland Cassowary Coast. He's a bohemian eco-warrior, a spiritual eclectic and a cantankerous loner but for the occasional visit from his mysterious neighbour, Josie. His idyllic existence living amongst the Orange-footed Scrub Fowl and the illusive Cassowary, however, is endangered when his estranged daughter Paula moves in. She has her eyes on his precious real estate. She has plans. Over my dead body, thinks Amos. He may be right.



THE SEASON:

Initial Season scheduled for
13 – 21 March

Performed 13 & 14th – remainder of
season cancelled due to COVID-19

Bulmba-ja Arts Centre

Number of Performances

2

Total Attendance

364 (2 performances)

Box Office Revenue

\$6763

CREATIVE TEAM:

Playwright:	Laurie Trott
Director:	Bridget Boyle
Dramaturg:	Kathryn Ash
Set Designer:	Simona Cosentini
Set Designer:	Simone Tesorieri
Lighting Designer:	Jason Glenwright
Projection Design:	Nathan Sibthorpe
Sound Design:	Guy Webster
Stage Manager:	Teegan Kranenburg
Production Technical Advisor:	Sam Gibb

SECONDMENTS

Directing Secondment/	
Production Concierge:	Susan Prince
Technical Observer:	Mayambo (Maya) Peipul
Production assistant:	Dylan Thompson

FEATURING:

Natalie Taylor

Steven Tandy

DARE TO DREAM

REMOTE TOUR & RESIDENCY PROGRAM
CANCELLED DUE TO COVID-19

QUEENSLAND WINTER PLAYFEST

FESTIVAL OF REGIONAL THEATRE
CANCELLED DUE TO COVID-19

SUPPORTED PRODUCTION:

KNOWING ME BY AMBER GROSSMANN

AN OVERALL ARTS PRODUCTION IN PARTNERSHIP WITH JUTE THEATRE COMPANY

Knowing Me, a new work written and directed by local playwright Amber Grossmann, creator of Overall Arts and the Young Creative's Mentorship Program, explored the 'new normal' in a world ravaged by COVID-19, and the effects of social isolation and loneliness on Queensland's Youth.

It was performed by seven of the region's up and coming young creatives, who have been working for the past three months under the Young Creative's Mentorship Program.

The Young Creative's Mentorship Program was created and managed by Overall Arts, in partnership with JUTE Theatre Company and Hayley Gillespie.

Knowing Me is a story of struggle and triumph – the performances of these young artists were unmissable!



THE SEASON:

13 - 14 November

Number Of Performances

3

Total Attendance

175

CREATIVE TEAM:

Director:

Amber Grossmann

Designer:

Hayley Gillespie

Lighting Designer:

Dylan Hamilton-Thompson

Sound Designer:

Clara Satzke

CAST:

Thor Morrison

Emily Ayson

Beatrice Holloway

Bethany Roby

Tess Wilson

Chloe Stone

Lola Hazelwood

Liz Christensen

NEW THEATRE WORK CREATIVE DEVELOPMENT & SHOWCASE



New Work Development Programs

- **I is Maggie** Creative Development & Showcase
- **Fearless** Table Read (creative development postponed due to COVID-19)
- **Fearless** Creative Development & Showcase
- **La Bella Figura** Creative Development & Showcase
- **In My Shoes** Migrant & Refugee Stories
Artist in Residence Program

Creative Developments

A creative development is an advanced form of script development where the writer works intensively with a director, dramaturg, actors and even at times designers for five days in a hothouse workshop setting. At the end of the five days, and a number of rewrites, the work is given a public reading, with feedback from the audience. It's a speedy way to bring a script to the boil, and create a buzz around the work for a potential future audience.

I is Maggie

by Saengthien Klamkaew
& Dennis McIntosh

"We come to this country, we dream about Australia. We fight to get here, we crawl to get here. We have hope in our hearts, good will in our actions. But you are waiting for us. You make the machine that crushes us, for what, a nice wine? You make a factory that boils us, for another holiday? You make a roster that keeps us poor. Why would you do that? You push our spirit down, you put your foot on our throat, for, for? Another house? A holiday house, maybe?"

Ironically servicing the luxury paradise hotels of the tourist industry, Maggie's industrial laundry workplace is anything but paradise, and the work conditions are rife with dangers and illegal practices. This story is told through the eyes of Maggie, a tough-minded, spirited Thai immigrant who decides to stand up and be heard.

This script seeks to express some of the struggle felt by migrants, especially those who are vulnerable when using English as a second language, and often unaware of Australian workforce regulations. "I is Maggie" responds to the diverse workforce that supports Australian industry, and is proud to support artists from non-English Speaking backgrounds express that contribution within a respectful and collaborative process. The work comes from the lived experience of Thai Australian, Saengthien Klamkaew, developed in collaboration with Write Sparks alumnus Dennis MacIntosh.

"I Is Maggie", a full-length new work by Dennis MacIntosh and Saengthien Klamkaew concerning the cultural, economic and social realities of a group of migrants working in the industrial laundries of Cairns. The artistic and creative team, made up of two Thai-Australian actors and two Anglo-Australians, complete with a young and talented Thai Director and Thai-Australian Cultural consultant, an important work given that Australian theatre still suffers from a lack of Asian-Australian stories.

Creative Development Dates:

Workshops | 13 – 17 Jan 2020

Bulmba-ja Arts Centre Theatre

Showcase Presentation | 17 Jan

Bulmba-ja Arts Centre

Number of artists engaged **10**

Total attendance to the public reading **72**

Cast: Dell Beckman
Bodelle De Ronde
Susan Prince
Tivy Siripanch

Creative Team:

Playwright: Dennis McIntosh
Playwright: Saengthien Klamkaew
Director: Pranchalee Khajai
**Dramaturg/
Creative
Producer:** Kathryn Ash
**Cultural
Consultant:** Jaruwan Jansoi (Pang)
Designer: Simona Cosentini



Fearless

by Charmaine (Dizzy) Doolan

- ONLINE

**Table Read and Discussion
(creative development postponed
due to COVID-19)**

"In the unforgiving glare of stage light, Dizzy – rap artist, fighter, and survivor – stands defiant with two black eyes and a split lip badly concealed under heavy make-up, but here she faces her worst fear; those who would put her down, laugh at her, shame her for risking herself for her dream. As she looks out into the darkened auditorium, she can almost hear them sniggering. What's a beat-up girl from the bush doing on this big city stage anyway? Dizzy's got to ask herself the same thing."

Arising from JUTE's Write Sparks script development program, Townsville-born and Cairns-based rapper and emerging First Nations writer, Charmaine 'Dizzy' Doolan's uncompromising new work throbs with anger, power, and ultimately triumph over a lifetime of wrong turns. The work will fuse rap storytelling with evocative Blues, two powerful protest music genres that express the journey of one First Nations family.

Due to COVID-19 restrictions, in particular with regard to travel and with respect to evidence suggesting Indigenous Australians have a significantly elevated health risk if infected with the virus, the company conducted a one-day online reading and discussion with the director, assistant director, actors and dramaturg. This began the process of development for the playwright with the promise of a future period of relatively fewer restrictions later in the year.

Cast:

Warren Clements
Alec Doomadgee
Taeg Twist
Roxanne McDonald

Creative Team:

Director: Isaac Drandic

Music Composer & Sound Designer:
Kim (Busty Beatz) Bowers

Dramaturg:
Kathryn Ash



Fearless

by Charmaine Doolan

- CREATIVE DEVELOPMENT & SHOWCASE

"I'm a fighter, bin a fighter my whole life – I'm a Doolan breed."

My grandfather was a boxer, (PUNCH) my father was a boxer (UPPERCUT) and well... I was just a street fighter (PUNCHES A FEW JABS)... if you didn't know how to fight then you was a target – and fuck being a target!"

Building on the dramaturgical work of the first mini-development in April 2020, Fearless again was put to the fire of a creative development process. This time COVID-19 restrictions had been loosened enough for the entire cast and creatives to gather at Bulmba-ja for 5 days.

Lead by Indigenous director/dramaturg, the all-Indigenous cast worked through aspects of the text and with the aid of a musical composer and sound designer, the script was imbued with further musical depth. Although the work is a slow burn, and there is a great deal more left to build before the story goes to stage, the potential for this new First Nations work to be ground-breaking remains clear.

Creative Development Dates:

Workshops | 23-24 & 27-29 May
Bulmba-ja Arts Centre and Tank 3, Tank Arts Centre

Showcase Presentation | May 29
Bulmba-ja Arts Centre

Number of artists engaged 8

Total attendance to the public reading 43

Cast: Tibian Wyles
Mark Sheppard
Taeg Twist
Roxanne McDonald

Creative Team:

Playwright:
Charmaine Doolan

Director:
Isaac Drandic

Set and Costume Designer:
Simona Cosentini

Set and Costume Design:
Simone Tesorieri

Music Composer & Sound Designer:
Kim (Busty Beatz) Bowers





La Bella Figura

by Frank D'Angelico, Roz Pappalardo and Kathryn Ash

A JUTE THEATRE COMPANY DEVELOPMENT

"When people think of us Italians, they think of the loving fat Nonna in the kitchen. The happy Nonno in the garden. The gaudy furniture. The cute and tidy stories of immigration. The obsession with food and flash jewellery, showing off and sure, sure it's funny. But some of it is so dark, Nonna. People get hurt. It breaks people's hearts. It wears people thin, and it cuts them deep..."

La Bella Figura (literally, 'the beautiful image'), a new comedy by second-generation Italian-Aussies and Cairns locals, Frank D'Angelico and Roz Pappalardo, explains how the Italian concept of 'la bella figura' has worked its often-hilarious magic in their lives and careers. Established regional playwright, Kathryn Ash worked with Roz and Frank to create a narrative developed in consultation with key Italian community leaders in 2019.

In this second creative development, which brought together the cast and creatives at Bulmba-ja for one week, the script was layered with original music from celebrated local composer, Rubina Kimiia. The week was spent working on tightening the scene work with improvisation, developing songs and teasing out the complex design elements. JUTE also invited three emerging directors to the room to observe the process.

The showcase gave a Cairns audience a sneak peek at the new songs, tantalizing snippets of the revised script, as well as proposed set and costume designs.

Today Simona visits her Nonna and Nonno, and as we hang out in the Cavaleri family farm kitchen, Simona is keen to share some family photographs and learn how to cook her Nonna's famous Siciliana sauce. But something else is bubbling away. Something awkward and possibly catastrophic. How will she tell them she is about to cross the line, making an unforgivable move that may bring social shame on her whole family?

'La Bella Figura' will be produced by JUTE in October 2021, an ambitious arts hero event, featuring significant community engagement and participatory experiences, youth mentorship and professional development, in a landmark theatre-with-music production celebrating Cairns' Italian heritage and shared diverse cultural narrative, a cross-artform theatre experience promoting Cairns' cultural vibrancy.

Creative Development Dates:

Workshops | 30 Nov - 4 Dec 2020

Bulmba-ja Arts Centre Theatre

Showcare Presentation | 4 Dec 2020

Number of artists engaged **13**

Total attendance to the public showcase **77**

Cast:

Roz Pappalardo

Frank Dangelico

Creative Team:

Director:

Suellen Maunder

Composer, Lyricist, Musican:

Rubina Kimiia

Writer: Kathryn Ash

Costume Designer:

Simona Cosentini

Set Designer:

Simone Tessorieri

Projection Designer:

Nathan Sibthorpe

Production Consultant:

Sam Gibb

Directorial Observers:

Natalie Taylor

Sonia Zabala

Amber Grossman

Work Experience Student:

Sonosuke Arakawa





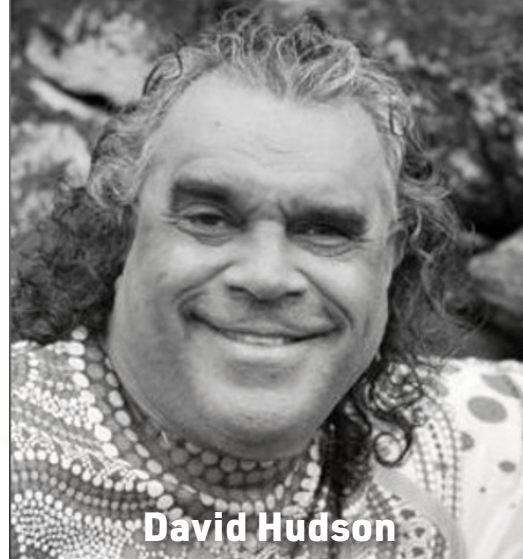
IN MY SHOES Refugee & Migrant Stories Artist In Residence Program & Showcase

In My Shoes! Migrant and Refugee Stories

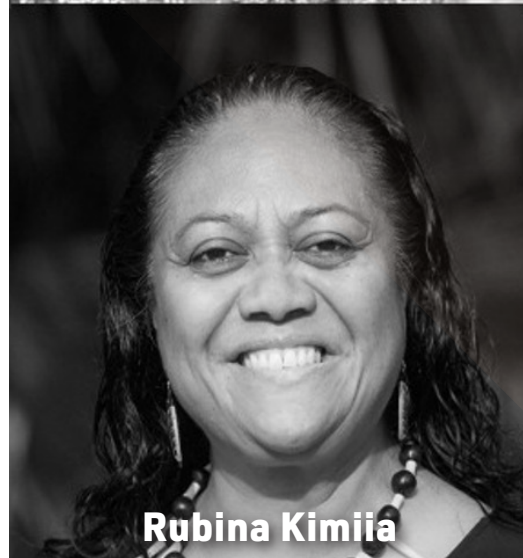
JUTE Theatre Company and Centacare Multicultural Services

In partnership with Centacare Multicultural Services, JUTE Theatre Company hosted four local Artists-in-Residence at Bulmba-ja Arts Centre along with 25 young artists from refugee and migrant backgrounds. The theme of the week was "In My Shoes, Stepping Up and Out", talking about change, continuity, adaptability and giving the audience a bold expression of what it is to take on a new life in Cairns.

The week culminated in a showcase performance at Bulmba-ja Arts Centre Theatre.



David Hudson



Rubina Kimiia



Simona Cosentini



Susan Prince

Creative Development Dates:

Workshops | 14 - 18 Dec 2020

Bulmba-ja Arts Centre Theatre

Showcase Presentation | Dec 18

Number of artists engaged	4
Number of young Refugee/ migrant Participants	25
Total attendance to the public showcase	66

Creative Team:

Performance:	Susan Prince
Dance & Visual Arts:	David Hudson
Music Composer:	Rubina Kimiia
Designer:	Simona Cosentini
Dramaturg:	Kathryn Ash

SKILLS DEVELOPMENT & PARTICIPATION PROGRAMS

Write Sparks

NQRASN Online Youth Write Sparks residency

JUTE continued to work with the Regional Arts Service Network in 2020 with an writing program delivered online to 9 young people across North Queensland.

The program was delivered over 3 weekends working with the young writers to develop their scripts through writing craft workshops. The program culminated in readings of the draft scripts by professional actors based in Townsville.

Workshop Residencies

9 & 10 May; 23 & 24 May and 20 & 21 June 2020

Online: Google Meet Platform

Online Play Readings: 20 & 21 June

Facilitator/Dramaturg: Kathryn Ash

Number of Participants: 9 (aged 13 – 17)

Write Sparks

101 Cairns Residency

Write Sparks 101 is an annual JUTE program that offers a professional development opportunity for writers living and working in Far North Queensland.

The professional development package guides groups of like-minded writers through the process of developing new performance work.

The program was delivered through a 3-week writing residency program plus one-on-one dramaturgical support and culminated in a professional play reading of the drafts of work.

Facilitator/Dramaturg: Kathryn Ash

The themes being explored by these writers include:

- Death & Grief
- Womens equal rights and opportunities
- LGBTIQ+ perspective
- Homelessness
- Modern Love and Motherhood

Workshop Residencies

9 – 11 October | 16 – 18 October | 20 – 22 November 2020

One-on-One Dramaturgy: 19 – 23 October 2020

Play Readings: 22 November 2020

Facilitator/Dramaturg: Kathryn Ash

Participants:

Linda Roberts	Elke Nagy
Kerri Adams	Nikki Doll
Ashleigh Lawrence	Chris Hallam
Marilyn Marsh Booth	Nereace Howes
Jean Claude Serugaba	Rebecca Altaffer
Patrick Mays	

Number of Participants: 11

3 Culturally & Linguistically Diverse | 2 LGBTIQ+

JUTE Actors Studio

TERM 1

February 12 - March 11

(3 weeks cancelled due to COVID-19)

TERM 2

Cancelled due to COVID-19

TERM 3

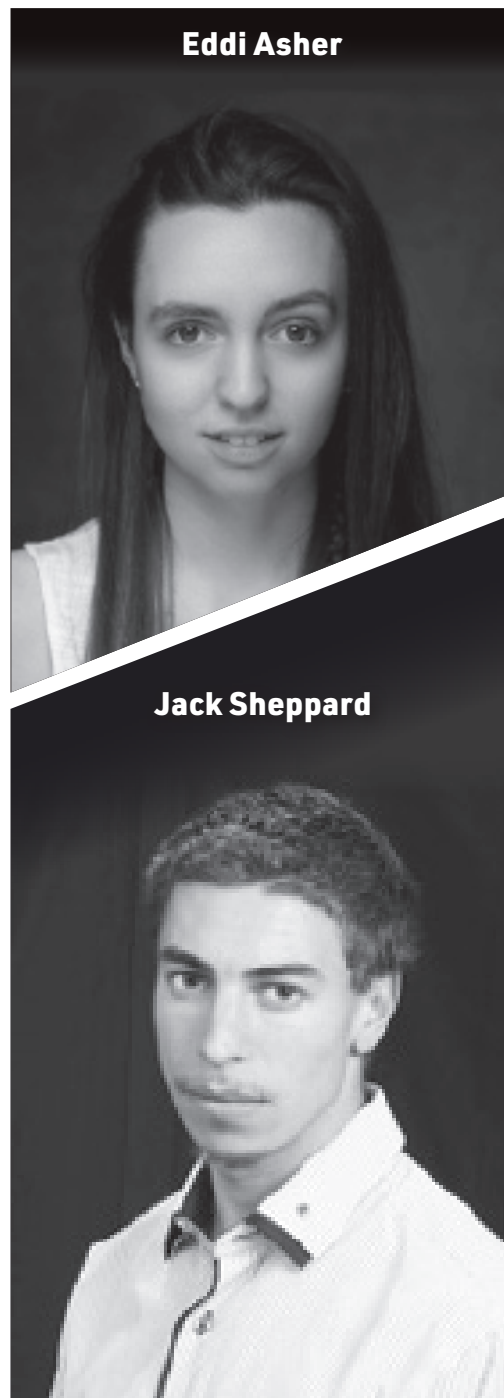
July 29 - September 16

TERM 4

October 21 - December 9

The JUTE Actors Studio answers the identified need for the delivery of professional theatre craft workshops in this region.

The program works to develop acting skills, stage craft, ensemble work, creative capacity and deepens understanding of acting as a professional practice. A high level of discipline and commitment to the training is expected from all students.



Facilitators

Term 1: Jack Sheppard

Term 3 & 4: Eddi Asher

Number of participants

9 - 12 yrs | Gobos
24 / 151 attendances

13 - 17 yrs | Parcans
42 / 287 attendances

18 yrs + | Ensemble
30 / 148 attendances

Showcase Panels included

Suellen Maunder, Kathryn Ash,
Susan Prince, Amber Grossman

Showcase Attendance 81



JURF

OUTREACH PROGRAMS



Lullaby Project – Safer Streets

Workshops: February 5 to March 3

JUTE worked in collaboration with Safer Streets and Centacare Multicultural Services to deliver a series of community workshops in performance making and storytelling. The project included 6 weeks of workshops culminating in a performance for Harmony Day. Unfortunately we were only able to deliver 4 workshops before the program was cancelled due to COVID-19.

Number of Participants across 4 workshops:

94

Facilitators:

Jack Sheppard

Taeg Twist

Susan Prince

Rubina Kimiia

Kathryn Ash

Lullaby Project Online (Safer Streets)

Online

Facilitators:

Kathryn Ash

Madonna Davies

Online Platform:

Facebook

**Dates: 12, 19 & 26
May 2020**

**2, 9 & 16
June 2020**



JUTE Revue

JUTE Revue is a 'showcase' of the Company and our programs and brings together JUTE's stakeholders including artists, arts organisations, supporters, funders, investors and donors. The Revue event seeks new ways of connecting, engaging and sharing JUTE's story and celebrating the company's connections.

This event is particularly important for our Board members – who are able to meet everyone that works with the organisation while building trust with stakeholders. This is where the Board hear positive stories about JUTE from the people who work directly with the team.

The event included some highlights including a visit from Arts Minister Leeanne Enoch who was inspired to make an impromptu speech about the value of JUTE, inspiring our stakeholders, one of whom doubled their 3-year donation commitment on the strength of all that we had conveyed about the impact of JUTE programs for our community.

Only one event took place in 2020 due to COVID-19 impacts.



OUTCOMES INCLUDE:

- Board building personal relationships with JUTE's partners
- Opportunities to develop further partnerships and support
- Maintaining trust and loyalty
- Strengthening relationships
- Bringing a deeper understanding of the range and depth of creative activities undertaken by JUTE

Attendance: **48**

JUTE

SPONSORS & PARTNERSHIPS



IN KIND SUPPORT



HOLDING REDLICH

frontrow foto



SOCIAL
IMPACT
HUB



MacDonnells Law

PARTNERS



APPENDIX – 2020 AUDITED STATEMENTS

**JUST US THEATRE ENSEMBLE
TRADING AS JUTE THEATRE COMPANY
ABN: 61 072 586 639**

DIRECTORS' REPORT

The Directors present their report, together with the financial statements, on the Company for the year ended 31 December 2020.

Information on Directors

The following persons were directors of the Company during the whole of the financial year and up to the date of this report, unless otherwise stated:

Gillian Townsend (Chairperson)

Karyn Weller (Secretary)

Suellen Maunder

Saurav Kataria

John Paul Fischbach

Patricia Courtney

David Layt (appointed 20 January 2021)

Operating results

The surplus of the Company amounted to \$225,059.55 (2019: 22,082.28). This result is predominantly due to cost cutting and Government COVID-19 stimulus support received during the year.

Retained surpluses

In line with the Company's Reserves Policy, the Board of Directors have determined that \$260,000 of retained surpluses should be held in an Operating Reserve Fund to support the future solvency and strategic direction of the Company. This amount is equivalent to 3 months of budgeted expenditure in 2021 and is in line with the not-for-profit target recommended by the Australian Charities and Not-For-Profits Commission (ACNC).

A further \$20,000 has been approved to be held in an Opportunity Reserve Fund to research and develop a business case for a program/s that can deliver a profit with a long-term objective to make the Company more financial sustainable and independent.

Significant changes in the state of affairs

There have been no significant changes in the state of affairs of the Company during the year.

Principal activities

The principal activities of the Company during the financial year were providing support and opportunities for those working in theatre in Far North Queensland, developing and working collaboratively with regional theatre companies and practitioners, and developing and mounting performances in Cairns and in other venues.

No significant changes in the nature of the Company's activity occurred during the financial year.

Events after the reporting date

No matters or circumstances have arisen since the end of the financial year which significantly affected or may significantly affect the operations of the Company, the results of those operations, or the state of affairs of the Company in future financial years.

Environmental issues

The Company's operations are not regulated by any significant environmental regulations under a law of the Commonwealth or of a state or territory of Australia.

**JUST US THEATRE ENSEMBLE
TRADING AS JUTE THEATRE COMPANY
ABN: 61 072 586 639**

DIRECTORS' REPORT (CONTINUED)

Dividends paid or recommended

No dividends were paid or declared since the start of the financial year. No recommendation for payment of dividends has been made.

Options

No options over issued shares or interests in the Company were granted during or since the end of the financial year and there were no options outstanding at the date of this report.

Insurance of officers

During the year, the Company paid a premium to insure officers of the Company. The officers of the Company covered by the insurance policy include all Directors.

The liabilities insured are legal costs that may be incurred in defending civil or criminal proceedings that may be brought against the officers in their capacity as officers of the Company, and any other payments arising from liabilities incurred by the officers in connection with such proceedings, other than where such liabilities arise out of conduct involving a wilful breach of duty by the officers or the improper use by the officers of their position or of information to gain advantage for themselves or someone else to cause detriment to the Company.

The Company has not otherwise, during or since the end of the financial year, except to the extent permitted by law, indemnified or agreed to indemnify any current or former officer of the Company against a liability incurred as such by an officer.


Indemnification of auditors

No indemnities have been given to auditor of the Company during or since the end of the financial year.

Auditors independence declaration

The lead auditor's independence declaration in accordance with section 307C of the Corporations Act 2001, for the year ended 31 December 2020 has been received.

Signed in accordance with a resolution of the Board of Directors:


Chairperson:
Gillian Townsend


Director:
Suellen Maunder

Dated this 25 day of March 2021.

**AUDITOR'S INDEPENDENCE DECLARATION UNDER S 307C OF THE CORPORATIONS ACT 2001
TO THE COMMITTEE OF MANAGEMENT OF JUST US THEATRE ENSEMBLE T/A JUTE THEATRE
COMPANY**

I declare that, to the best of my knowledge and belief, during the year ended 31 December 2020 there have been no contraventions of:

- i. the auditor's independence requirements as set out in the *Australian Charities and Not-for-profits Commission Act 2012* in relation to the audit; and
- ii. any applicable code of professional conduct in relation to the audit.

Brian Tucker Audit

BRIAN TUCKER AUDIT
Chartered Accountants

DocuSigned by:

8FB9E58A51ED424...

BILLY-JOE THOMAS
Director

Dated at Perth, Western Australia this 25th day of March 2021.

**JUST US THEATRE ENSEMBLE
TRADING AS JUTE THEATRE COMPANY
ABN: 61 072 586 639**

**STATEMENT OF FINANCIAL POSITION
AS AT 31 DECEMBER 2020**

	Note	2020 \$	2019 \$
ASSETS			
CURRENT ASSETS			
Cash and cash equivalents	6	539,763.79	294,713.29
Trade and other receivables	7	50,074.29	39,536.46
Other current assets	8	10,257.33	8,993.39
TOTAL CURRENT ASSETS		600,095.41	343,243.14
NON-CURRENT ASSETS			
Property, plant and equipment	9	4,495.22	6,286.71
TOTAL NON-CURRENT ASSETS		4,495.22	6,286.71
TOTAL ASSETS		604,590.63	349,529.85
LIABILITIES			
CURRENT LIABILITIES			
Trade and Other Payables	10	60,972.39	72,063.91
Other current liabilities	11	263,571.81	223,499.05
TOTAL CURRENT LIABILITIES		324,544.20	295,562.96
NON-CURRENT LIABILITIES			
Provisions	12	1,019.99	-
TOTAL NON-CURRENT LIABILITIES		1,019.99	-
TOTAL LIABILITIES		325,564.19	295,562.96
NET ASSETS		279,026.44	53,966.89
EQUITY			
Retained surpluses	13	279,026.44	53,966.89
TOTAL EQUITY		279,026.44	53,966.89

JUST US THEATRE ENSEMBLE
TRADING AS JUTE THEATRE COMPANY
ABN: 61 072 586 639

DETAILED PROFIT AND LOSS STATEMENT
FOR THE YEAR ENDED 31 DECEMBER 2020

	2020	2019
	\$	\$
<hr/>		
EARNED INCOME		
Contract & co-production fees	40,880.19	58,117.39
Box office	8,650.60	24,946.75
Income from Activities	21,307.98	45,483.20
	70,838.77	128,547.34
	<hr/>	<hr/>
PRIVATE SECTOR INCOME		
Donations, sponsorship & fundraising	23,267.54	22,123.46
Tim Fairfax Family Foundation	217,000.00	224,000.00
QLD Community Fund	27,691.60	17,308.40
Other foundations & subsidies	-	-
In-kind support	98,260.00	103,020.70
	366,219.14	366,452.56
	<hr/>	<hr/>
GRANT INCOME		
Arts Queensland - Organisations Fund	300,000.00	200,000.00
Arts Queensland - Project Grants	74,712.00	24,049.00
Australia Council - Project Grants	19,959.00	242,991.00
Other State Agencies	13,436.00	4,937.55
Other Commonwealth	11,579.18	10,800.00
	419,686.18	482,777.55
	<hr/>	<hr/>
OTHER INCOME		
Interest received	827.51	4,672.56
JobKeeper revenue	75,000.00	-
Cashflow Boost revenue	85,062.00	-
Other revenue	2,594.65	100.00
	163,484.16	4,772.56
	<hr/>	<hr/>
TOTAL INCOME	1,020,228.25	982,550.01
	<hr/>	<hr/>

JUST US THEATRE ENSEMBLE
TRADING AS JUTE THEATRE COMPANY
ABN: 61 072 586 639

DETAILED PROFIT AND LOSS STATEMENT
FOR THE YEAR ENDED 31 DECEMBER 2020

	2020	2019
	\$	\$
<hr/>		
EXPENSES		
Accounting & bookkeeping expenses	4,381.86	5,171.66
Auditor's remuneration	5,000.00	4,400.00
Business development	61,775.08	11,136.47
Computer expenses	4,560.00	-
Depreciation	4,572.40	7,233.43
Holiday pay, movement in accrual	938.81	(4,914.14)
Insurance	7,705.72	6,277.60
Long service leave, movement in provision	495.45	4,367.98
Marketing, publicity, promotion, launches & opening nights	44,617.59	82,007.53
Printing, stationery & office supplies	41,277.33	31,057.50
Production & creative contractors and expenses	77,830.79	84,042.93
Production & exhibition staging costs	38,849.33	8,464.85
Other production & exhibition costs	5,591.33	20,973.22
Other governance	-	7,533.99
Sundry expenses	61,371.67	5,496.33
Superannuation contributions, employees	31,739.93	41,795.46
Superannuation contributions, contractors	6,218.58	5,849.84
Telephone	2,503.55	894.27
Travelling expenses	29,142.85	45,866.59
Venue rental & charges	10,526.77	72,952.82
Wages	350,566.34	511,585.57
Workers' compensation insurance	5,503.32	8,273.83
TOTAL EXPENSES	795,168.70	960,467.73
	<hr/>	<hr/>
PROFIT	225,059.55	22,082.28
	<hr/>	<hr/>



JUTE

JUTE THEATRE COMPANY

BULMBA-JA ARTS CENTRE,
96 ABBOTT STREET CAIRNS QLD 4870
07 4281 6832
INFO@JUTE.COM.AU
WWW.JUTE.COM.AU

